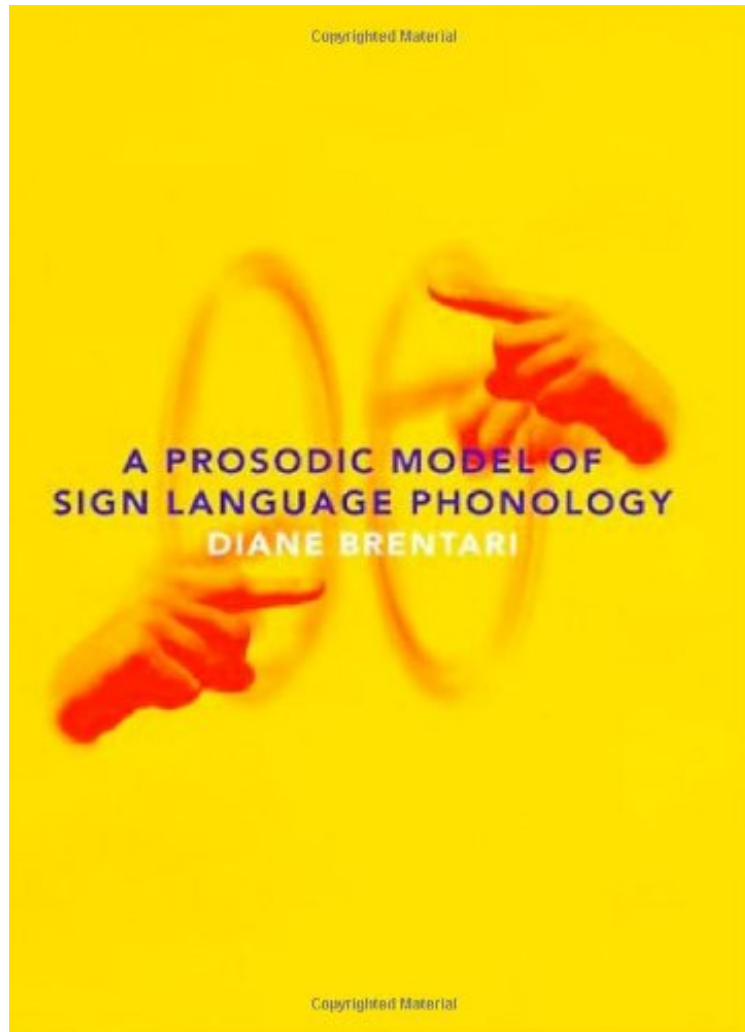


(Mobile ebook) A Prosodic Model of Sign Language Phonology (Language, Speech, and Communication)

A Prosodic Model of Sign Language Phonology (Language, Speech, and Communication)

Diane Brentari

*audiobook / *ebooks / Download PDF / ePub / DOC*



DOWNLOAD



READ ONLINE

#2398935 in Books 1999-03-05 Original language: English PDF # 1 9.00 x 1.20 x 6.30 | 1.81 #File Name: 0262024454396 pages | File size: 45.Mb

Diane Brentari : A Prosodic Model of Sign Language Phonology (Language, Speech, and Communication)

before purchasing it in order to gauge whether or not it would be worth my time, and all praised A Prosodic Model of Sign Language Phonology (Language, Speech, and Communication):

0 of 0 people found the following review helpful. goodBy Alaawell i buy that for friend for studying who lives in other country , he was very happy with it, it arrive in time without any problem and was exactly as they write in and that's what i like when i buy any thing from online market , get it on time and the item you buy when you get it exactly as they describe and also like the photos , thank you0 of 0 people found the following review helpful. One for your linguistics text collectionBy Madison SeaverA good, readable book. Brentari's analysis of local lexicalization in ASL

is particularly impressive. Very glad I own it. 0 of 0 people found the following review helpful. 5 star. By Michelle I will recommend it to my friend. Great product. Feels good in the hand. good memory. so fast, receive it next day . my father this it is the best ,

Superior to any other book on the subject that I have seen. I can see it being used as a class text or reference for current theory in sign language phonology. This book is intended in part to provide linguists and cognitive scientists who do not know sign language with a point of entry into the study of sign language phonology. At the same time, it presents a comprehensive theory of American Sign Language (ASL) phonology, while reviewing and building on alternative theories. One claim of this theoretical framework is that, because of sign language's visual/gestural phonetic basis, the consonant-like units and vowel-like units are expressed simultaneously with one another, rather than sequentially as in spoken languages. A second claim is that movements operate as the most basic prosodic units of the language. The author is concerned to show both the similarities and differences between signed and spoken languages, and to indicate some directions for future work in cognitive science that can be derived from her phonological model.

This book is a major contribution to our knowledge of sign language phonology both in its comprehensiveness and its complexity. The prosodic model offered here distinguishes between features necessary for describing movement (prosodic features) and all others (inherent features). Many phonological issues are handled insightfully with this distinction, particularly issues in syllable structure, which up to this point have baffled many a linguist. This book should be read by anyone interested in sign, in syllable structure, and in prosody in general. (Doona Jo Napoli, Swarthmore College) Dr. Brentari's book offers an up-to-date, informative, original and well-documented synthesis of current-day theories on the word-level phonological structure of sign languages. (Harry van der Hulst, Holland Institute of Generative Linguistics, Leiden University) Brentari has written a lucid, engaging, and expert account of the phonological structure of signed languages, providing an excellent resource for linguists and psychologists, alike. Brentari's book is essential reading for anyone interested in the abstract nature of human language. (Karen Emmorey, The Salk Institute for Biological Studies) About the Author Diane Brentari is Associate Professor of Linguistics and Director of the ASL Program at Purdue University. She has been a Visiting Scientist at the Center for Molecular and Behavioral Neuroscience at Rutgers University.