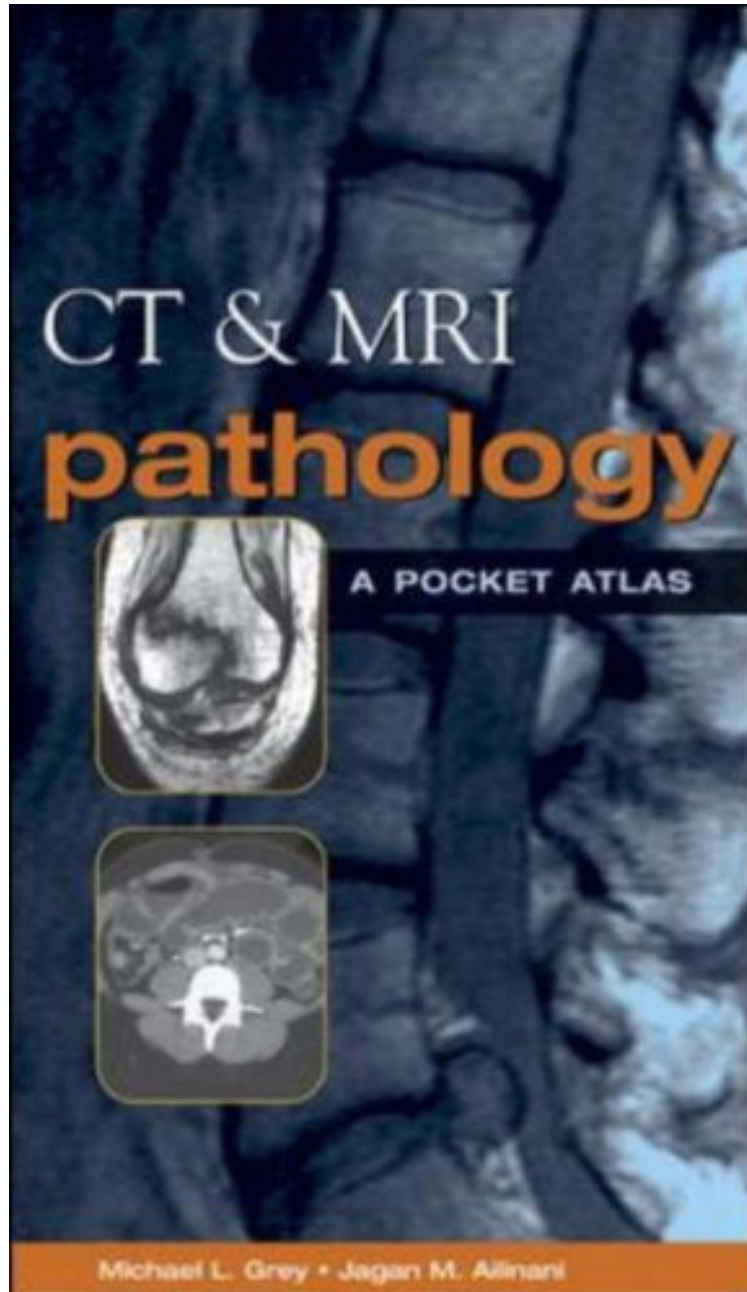


(Mobile library) CT MRI Pathology: A Pocket Atlas

CT MRI Pathology: A Pocket Atlas

Michael L. Grey, Jagan M. Ailinani
audiobook / *ebooks / Download PDF / ePub / DOC



DOWNLOAD



+

READ ONLINE

#1321062 in Books 2003-04-23Original language:EnglishPDF # 1 8.30 x .38 x 4.70l, .59 #File Name:
007138040X432 pages | File size: 31.Mb

Michael L. Grey, Jagan M. Ailinani : CT MRI Pathology: A Pocket Atlas before purchasing it in order to gage whether or not it would be worth my time, and all praised CT MRI Pathology: A Pocket Atlas:

0 of 0 people found the following review helpful. AwesomeBy RobGreat item and a great price. Works great. Would buy again.0 of 0 people found the following review helpful. Five StarsBy CustomerGreat price!0 of 0 people found the following review helpful. One StarBy carol hollopeterThis book is discusting. I separated pages to see they were stuck by blood!!!!

This pocket atlas includes unmatched state-of-the-art CT and MRI images of 110 common pathologies organized by body system and type of pathology. The easy-reference format provides a concise overview of pathology, etiology, epidemiology, signs and symptoms, imaging characteristics, treatment, and prognosis. Features a separate pediatric section and detailed index guides.

"Since most pocket books are atlases of normal anatomy, it's nice to see a pocketbook that covers common pathology in a concise manner. Everything from acoustic neuromas to pneumothoraces to rotator cuff tears are covered and are more common in an imaging facility than normal anatomy. This book provides insight into the disease along with useful images depicting the pathology."--Doody's Service (Doody's 2003-08-03)From the Back CoverThis new, one-of-a-kind portable resource offers fast access to high-quality images covering 110 common pathologies visualized on CT and MRI. CT MRI Pathology is the perfect tool for an overview of the pathology, etiology, epidemiology, signs symptoms, imaging characteristics, treatment, and prognosis. EXCELLENT REFERENCE IMAGES DISEASE SUMMARIES QUICK LOOKUPS PORTABILITY *Hundreds of images for on-the-spot comparisons *Capsule summaries put pathology, etiology, epidemiology, imaging characteristics, treatment, and prognosis at your fingertips *Organization by body system and pathologies enhance learning *Extensive, detailed index guides you quickly to what you wantAbout the AuthorMichael L.Grey, MS RT(R)(MR)(CT) is certified in MR and CT and teaches in the radiologic technology program at Southern Illinois University, Carbondale, Illinois. Jagan Mohan Ailinani, MD is Clinical Professor of Radiology, Southern Illinois University School of Medicine, Carbondale, Illinois, and visiting faculty, St. Louis University School of Medicine, St. Louis, Missouri. He is Diplomat of American Board of Radiology.